

Wireless Remote Control Monitor

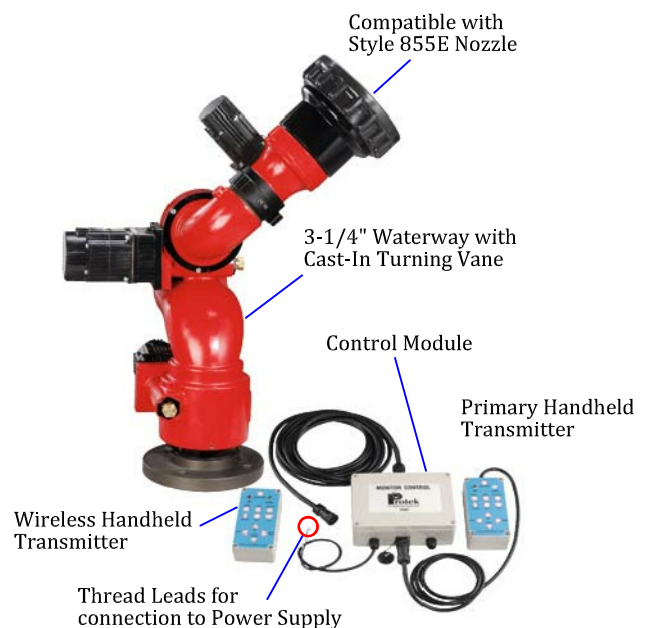


Protek's Wireless Remote Control Monitors are technologically advanced, electrically controlled deck monitors. Wireless remote control facilitates effective use of personnel and lowers the potential risk of injury from manual operations.

Style 935

- Allows operator to control the stream from as far as 200 meters away from the monitor for safety and efficiency
- 3-1/4" waterway for flow rate of up to 1250 GPM
- Cast-in turning vanes for efficient flow and minimal friction loss
- Optional 180° or 300° horizontal rotation
- Vertical travel 90° above 45° below horizontal
- Automatic nozzle with flow range of 1140-4800 LPM
- Comes with Protek's electric monitor nozzle Style 855E
- Electronic controls with manual override
- Brushless electric motor designed to eliminate sparks and reduce risk of ignition
- Automatic power off function during inactivity for enhanced performance and safety
- Programmable automatic oscillation and stow position
- Standard 24V with optional integrated AC-110V or AC-220V
- Optional 12V or with DC power supply

		Style 935	
Max. GPM (LPM)		1250 (4800)	
Inlet	Size	3"	4"
	Type	Flange	
Outlet		2-1/2" (65mm)	
Control		Electric	
Material		Alloy	
Finish		Red Powder Coating	
Friction Loss		16 psi at 1250 GPM	
		12 psi at 1000 GPM	
Travel		135° Vertical	
		180° or 300° Rotation	
Weight		33 Lbs. (15 kg)	



Style 935 monitor shown with standard accessories: Style 855E nozzle, control module, connection cables, panel mount primary transmitter and wireless handheld transmitter

Wireless Remote Control Monitor



sales @protektfire.com.tw
www.protektfire.com.tw

Wire or Wireless Joystick Control

3" Electric Valve



Touch Screen Control Panel (Also Monitor Position Display)

Designed to be mounted to the apparatus and be in ultimate control of the fire stream Fully customizable display screens make total control simple and user-friendly Controlling up/down, left/right, flow Pattern, opening the valve, oscillating and displaying the position cannot be easier.

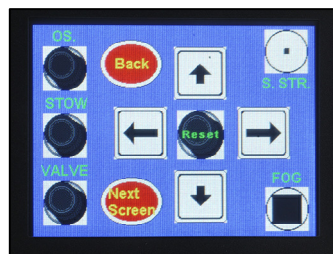
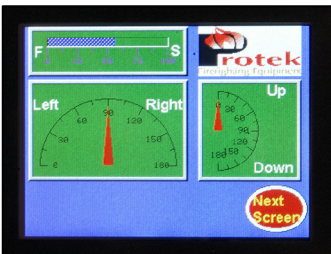


855E Electric Nozzle



Monitor Position Display

Functional Pad Display



Optional Accessories:

- 3" Electric Valve
- Wire or Wireless Joystick Control
- Touch Screen Control Panel
- Integrated AC-110V or AC-220V
- DC Power Supply
- Terminal Board

Specification

Style	Material	Pattern Control	Flow @ 100 psi (7 BAR)		Teeth	Inlet	Weight Lbs (kg)
			GPM	LPM			
855E	Alloy	Electric	300-1250	1140-4800	Spinning	2-1/2" (65 mm)	12 (5.5 kg)