

Holmatro

Ultra-lightweight Combi Tools 5111 / 5117 Series



 Holmatro Rescue World

 **holmatro**
mastering power



About **Holmatro**

For nearly half a century, Holmatro has been developing, producing and testing high-pressure hydraulic equipment for industrial, rescue, and special tactics applications. Based on the needs of users, our products are known for their high quality and innovative technology. Holmatro sells and services these products through offices in various countries and an extensive dealer network.

When it comes to Holmatro rescue equipment, our highly experienced engineers translate innovative ideas into lighter, more powerful solutions for fire and rescue departments. The result is a full range of high-quality tools that enable you to work efficiently under pressure. With Holmatro it's safer, easier and quicker to save lives.

Holmatro products are manufactured in the Netherlands and the USA at our state-of-the-art production facilities. Innovation, quality and service are at the heart of our company philosophy. Thanks to an extensive range of services including maintenance and training, our products last for years. That's why they are the tools of choice for rescue workers throughout the world. Once you use them, you'll use them for life.





**Holmatro 5111 /
5117 combi tools:**
Lower weight, smaller
size, high performance

Holmatro now introduces a new generation of ultra-lightweight, compact combi tools for rapid intervention in vehicle rescue and the extrication of persons trapped in emergency situations. Combining cutting and spreading capability these multifunctional hydraulic rescue tools can be used for a variety of applications. Thanks to their low weight and compact dimensions they are easy to carry, handle, transport and store and extremely suitable for use in confined spaces.

Depending on the nature of your operation you can choose between different models: hand-, pump or battery-operated and fitted with short arms or long arms. The short armed 5111 models are your best choice if you need a higher spreading force and the long armed 5117 models if a higher spreading distance is more important. Simply pick the most suitable tool for your job and you're ready to go!

**You can
count on us,
for life**



Holmatro combi tools CT 5111 (RH) & CT 5117 (RH): Ultra-lightweight with high performance

Extremely compact & ultra-lightweight ↓

- Ready for use weights only 8.2 and 8.9 kg
- Easy to carry, handle, transport and store
- Ideal for use in confined spaces



Optimal performance to weight ratio ↓

- Extremely high spreading force compared to size and weight (5111 models)
- Extremely high spreading distance compared to size and weight (5117 models)
- High cutting force compared to size and weight (both models)

Multifunctional ↓

- One tool for cutting, spreading and squeezing
- 5117 models also suitable for pulling
- Suitable for a variety of operations, from rapid intervention in vehicle rescue to USAR
- You can gain access to a modern vehicle with just one tool*
- Suitable for under water use
- Your choice: CT 5111 for highest spreading force, CT 5117 for highest spreading distance

* tested on a 2014 model Opel Insignia, avoiding the pillars

Connectable to all Holmatro pumps ↓

- The separate pump decreases the weight of the tool and increases maneuverability
- CORE Technology makes setup quick and easy: only one hose to connect to pump and tool





Equipped with i-Bolt



- Flat central bolt construction for better access to narrow spaces
- Squeezes the blades together directly, which results in less blade separation and a better cutting performance

Carrying handle with integrated LED lighting



- Provides illumination when rescue scene lighting is (still) absent
- Never work in your own shadow by day

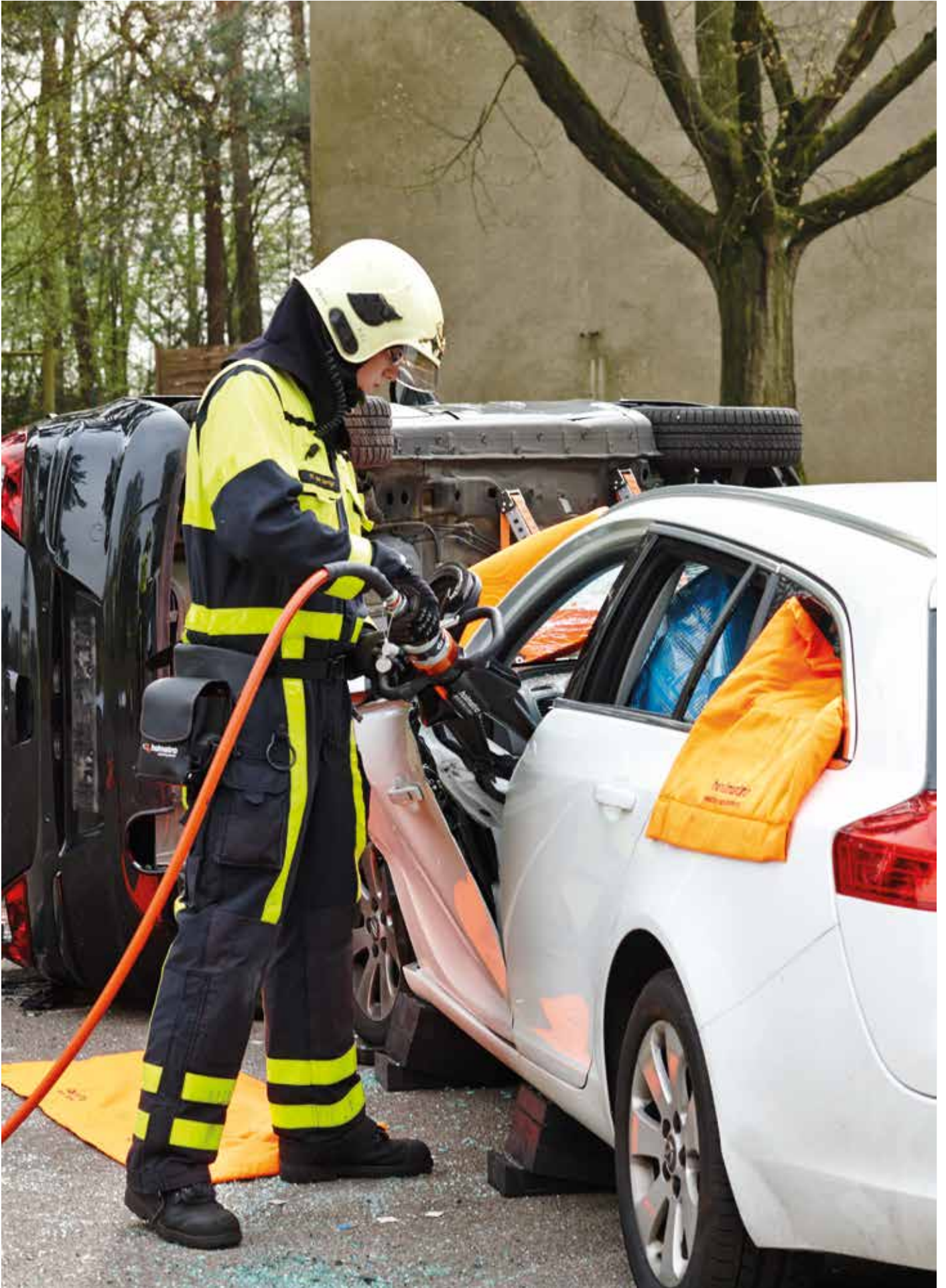


Also available with 360° rotatable, flat foldable carrying handle (RH models)



- Continuous swivel with 11 locking positions for use of the tool at almost any angle
- Collapsible for extra compact transportation and storage





Specifications



Model		CT 5111	CT 5111 RH	CT 5117	CT 5117 RH
article number		150.012.264	150.012.260	150.012.265	150.012.261
equipped with (connector type)		CORE	CORE	CORE	CORE
max. working pressure	bar/Mpa	720 / 72	720 / 72	720 / 72	720 / 72
spreading distance	mm	281	281	431	431
max. spreading force	kN/t	457 / 46.6	457 / 46.6	54 / 5.5	54 / 5.5
min. spreading force (EN 13204)	kN/t	48 / 4.9	48 / 4.9	28 / 2.9	28 / 2.9
max. cutting opening	mm	196	196	352	352
max. cutting force	kN/t	206 / 21	206 / 21	204 / 20.8	204 / 20.8
round bar (EN 13204)	mm	24	24	24	24
max. squeezing force	kN/t	44 / 4.5	44 / 4.5	27 / 2.8	27 / 2.8
pulling distance	mm	--	--	426	426
max. pulling force	kN/t	--	--	30 / 3.1	30 / 3.1
required oil content (effective)	cc	55	55	55	55
weight, ready for use	kg	8.2	8.2	8.9	8.9
dimensions (LxWxH)	mm	566 x 287 x 193	566 x 223 x 112	664 x 287 x 193	664 x 223 x 112
temperature range		-20 °C + 55 °C			
EN 13204		BK48/281-E-8.2		BK28/431-E-8.9	

Accessories (only for model 5117)



Item		CT 5117	CT 5117 RH
1	Pulling attachments set	150.182.241	150.182.241
2	Pulling chains set	150.582.548	150.582.548





Holmatro hand-operated combi tools HCT 5111 (RH) & HCT 5117 (RH): Ultra-lightweight, high performance, ultimate mobility

Extremely compact & ultra-lightweight



- Ready for use weights only 8.7 and 9.4 kg
- Easy to carry, handle, transport and store
- Ideal for use in confined spaces



Multifunctional



- One tool for cutting, spreading and squeezing
- 5117 models also suitable for pulling
- Suitable for a variety of operations, from rapid intervention in vehicle rescue to USAR
- You can gain access to a modern vehicle with just one tool*
- Suitable for under water use
- Your choice: HCT 5111 for highest spreading force, HCT 5117 for highest spreading distance

* tested on a 2014 model Opel Insignia, avoiding the pillars



Optimal performance to weight ratio



- Extremely high spreading force compared to size and weight (5111 models)
- Extremely high spreading distance compared to size and weight (5117 models)
- High cutting force compared to size and weight (both models)



Non-slip selection ring ↓

- Easy, intuitive selection of cutting or spreading function
- Offers good grip



Equipped with i-Bolt ↓

- Flat central bolt construction for better access to narrow spaces
- Squeezes the blades together directly, which results in less blade separation and a better cutting performance

Carrying handle with integrated LED lighting ↓

- Provides illumination when rescue scene lighting is (still) absent
- Never work in your own shadow by day

Self-contained with integrated 2-stage pump ↓

- For optimal freedom of movement
- Rapid deployment: Simply fold out the pump handle and start pumping
- Pump handle 360° rotatable and lockable in 22 positions for use of the tool in almost any position
- Pump handle also flat foldable for compact transportation and storage



Also available with 360° rotatable, flat foldable carrying handle (RH models) ↓

- Continuous swivel with 11 locking positions for use of the tool at almost any angle
- Collapsible for extra compact transportation and storage





Specifications



Model		HCT 5111	HCT 5111 RH	HCT 5117	HCT 5117 RH
article number		150.012.262	150.012.258	150.012.263	150.012.259
operator type		hand	hand	hand	hand
max. working pressure	bar/Mpa	720 / 72	720 / 72	720 / 72	720 / 72
spreading distance	mm	281	281	431	431
max. spreading force	kN/t	457 / 46.6	457 / 46.6	54 / 5.5	54 / 5.5
min. spreading force (EN 13204)	kN/t	48 / 4.9	48 / 4.9	28 / 2.9	28 / 2.9
max. cutting opening	mm	196	196	352	352
max. cutting force	kN/t	206 / 21	206 / 21	204 / 20.8	204 / 20.8
round bar (EN 13204)	mm	24	24	24	24
max. squeezing force	kN/t	44 / 4.5	44 / 4.5	27 / 2.8	27 / 2.8
pulling distance	mm	--	--	426	426
max. pulling force	mm	--	--	30 / 3.1	30 / 3.1
weight, ready for use	kg	8.7	8.7	9.4	9.4
dimensions (LxWxH)	mm	540 x 287 x 193	540 x 223 x 145	626 x 287 x 193	626 x 223 x 145
temperature range		-20 °C + 55 °C			

Accessories



Item		HCT 5111	HCT 5111 RH	HCT 5117	HCT 5117 RH
1	Pulling attachments set	--	--	150.182.241	150.182.241
2	Pulling chains set	--	--	150.582.548	150.582.548
3	Carrying/storage bag	150.182.228	150.182.227	150.182.228	150.182.227
4	Carrying strap	150.582.506	150.582.506	150.582.506	150.582.506
5	Carrying harness	150.553.115	150.553.115	150.553.115	150.553.115





Holmatro Greenline battery-operated combi tools GCT 5111 & GCT 5117: Lightweight, zero emission, 100% performance

Powered by lithium-ion battery technology ↓

- High battery capacity for maximum operation time
- Low self-discharge rate, no memory effect
- No energy consumption when idle
- LED indicator shows battery capacity (when tool is switched off, press button on battery to check state of charge level)
- Battery 100% rechargeable in 60 minutes
- Easy click-on / click-off system to change battery with one hand, within seconds
- Suitable for air transportation and use at high altitudes

Emission-free ↓

- No fumes from a pump: healthier for rescuers and victims
- Ideal for use in confined and/or underground spaces like tunnels, busses, trains and collapsed buildings
- Environmentally friendly



Lowest sound level ↓

- Less stressful for victims
- Easier communication between rescuers and victims
- Equipment produces no sound when idle



All weather proof ↓

- Suitable for use at below zero temperatures, up to -20°C
- Suitable for use in wet weather conditions

Compact, lightweight & ergonomic ↓

- Weights including battery only 13.7 and 14.4 kg
- Well-balanced
- Easy to carry, handle, transport and store
- Ideal for use in confined spaces



Optimal performance to weight ratio ↓

- Extremely high spreading force compared to size and weight (5111 model)
- Extremely high spreading distance compared to size and weight (5117 model)
- High cutting force compared to size and weight (both models)



Self-contained ↓

- For optimal freedom of movement
- Rapid deployment: Simply press the start button and start working



Multifunctional ↓

- One tool for cutting, spreading and squeezing
- 5117 model also suitable for pulling
- Suitable for a variety of operations, from rapid intervention to USAR
- You can gain access to a modern vehicle with just one tool*
- Your choice: GCT 5111 for highest spreading force, GCT 5117 for highest spreading distance

* tested on a 2014 model Opel Insignia, avoiding the pillars

Carrying handle with integrated LED lighting ↓

- Provides illumination when rescue scene lighting is (still) absent
- Never work in your own shadow by day

Equipped with i-Bolt ↓

- Flat central bolt construction for better access to narrow spaces
- Squeezes the blades together directly, which results in less blade separation and a better cutting performance



Specifications



Model		GCT 5111	GCT 5117
article number		150.052.036	150.052.037
operator type		battery	battery
max. working pressure	bar/Mpa	720 / 72	720 / 72
spreading distance	mm	281	431
max. spreading force	kN/t	457 / 46.6	54 / 5.5
min. spreading force (EN 13204)	kN/t	48 / 4.9	28 / 2.9
max. cutting opening	mm	196	352
max. cutting force	kN/t	206 / 21	204 / 20.8
round bar (EN 13204)	mm	24	24
max. squeezing force	kN/t	44 / 4.5	27 / 2.8
pulling distance	mm	--	426
max. pulling force	mm	--	30 / 3.1
weight excl. battery	kg	12.8	13.5
weight, ready for use	kg	13.7	14.4
dimensions (LxWxH)	mm	677 x 295 x 204	775 x 295 x 204
temperature range		-20 °C + 55 °C	
sound emission at 4 m / 1m (loaded)		dB(A) 65 / 74	

Accessories - required



Item	GCT 5111	GCT 5117
1 Battery BPA285, 5Ah-28V	150.006.208	150.006.208
2 Battery BPA283, 3Ah-28V	150.005.823	150.005.823

Accessories - recommended



Item	GCT 5111	GCT 5117
3 Battery Charger BCH1, 220-240V	150.182.208	150.182.208
4 Battery Charger BCH2, 100-120V	150.182.209	150.182.209
5 Battery Car Charger BCH3, 12-24 VDC	150.182.286	150.182.286
6 Mains Power Connector BMC 1, 220-240V *	150.182.206	150.182.206
7 Mains Power Connector BMC 2, 100-120V *	150.182.207	150.182.207
8 Battery pouch	150.182.214	150.182.214
9 Carrying harness	150.553.115	150.553.115
10 Carrying strap	150.182.249	150.182.249
11 Carrying/storage bag	150.182.228	150.182.228
12 Pulling attachments set	--	150.182.241
12 Pulling chains set	--	150.582.548

* mains cable length: 2.5 m | tool cable length: 8 m



1-2



3-5



6-7



8



9



10



11



12



13



Holmatro Netherlands
Rescue equipment
 Raamsdonksveer, The Netherlands
 T +31 (0)162 58 92 00
 E rescue@holmatro.com
 Manufacturing, sales & service



Holmatro Group
 World Headquarters
 Raamsdonksveer, The Netherlands



Holmatro USA
 Glen Burnie, MD, U.S.A.
 Manufacturing, sales & service



Holmatro UK
 Nottingham, UK
 Sales & service



Holmatro China
 Suzhou, Jiangsu Province, China
 Sales & service



Holmatro Poland
 Warsaw, Poland
 Sales & service

www.holmatro.com

Disclaimer

While the greatest care has been devoted to the content, it is possible that the information in this printed matter is incorrect or incomplete. N.V. Holmatro and its affiliated companies (hereafter: Holmatro) cannot be held liable in any way for the consequences of activities undertaken based on this printed matter. If you have any doubts about the correctness or completeness of the information, you shall contact Holmatro (phone number: +31 (0) 162-589200).

Nothing from this printed matter can be copied and/or made public in any way without the explicit authorization of Holmatro.